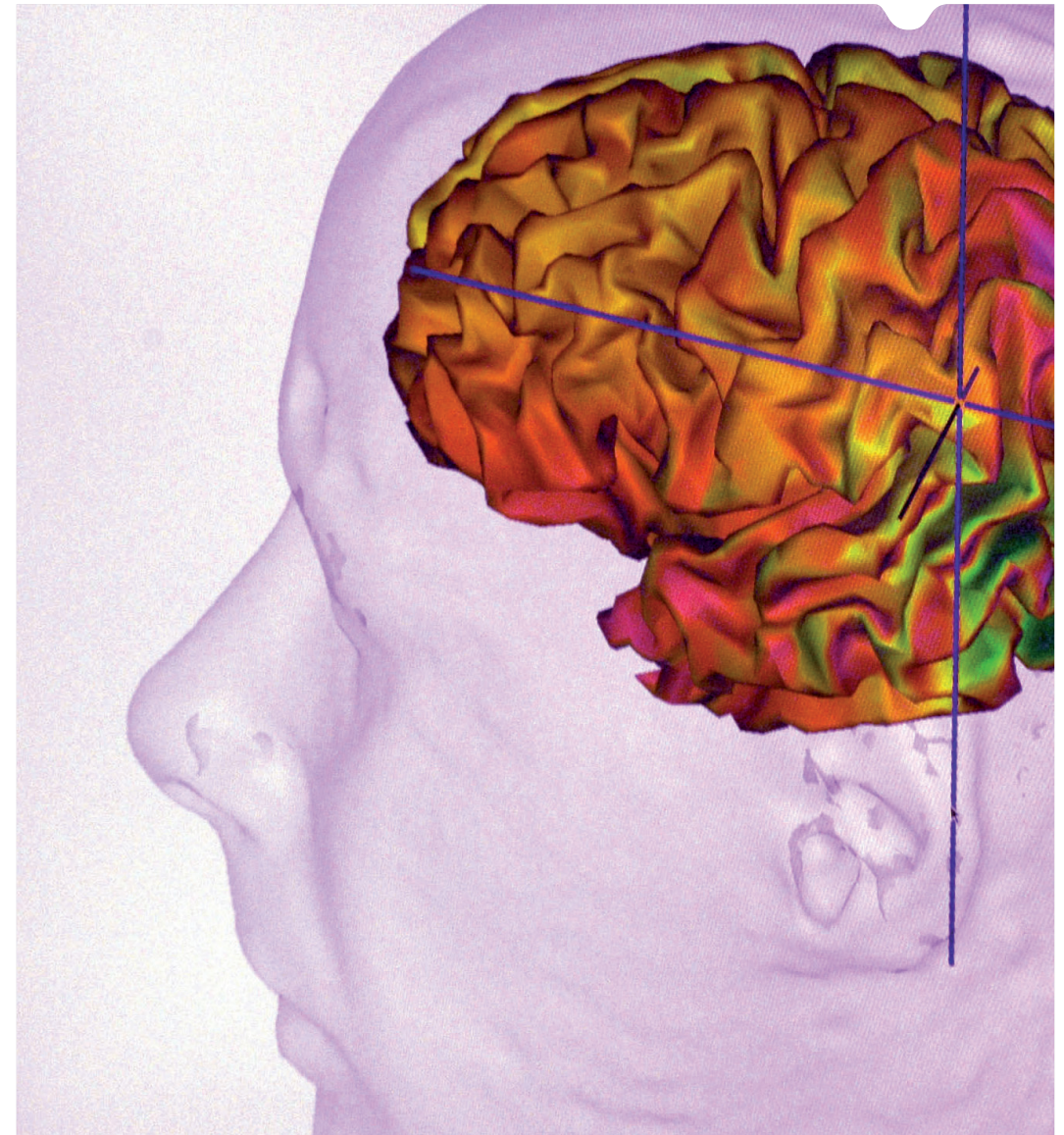


MASTER OF INTEGRATIVE  
BIOLOGY AND PHYSIOLOGY  
DUAL MASTERS IN BRAIN AND MIND SCIENCES



[www.upmc.fr](http://www.upmc.fr)

**UPMC**  
SORBONNE UNIVERSITÉS

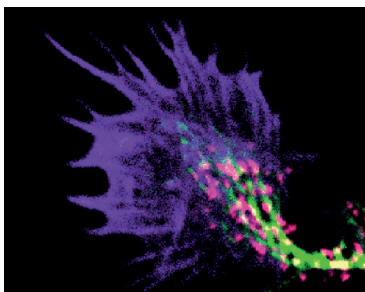
**Direction des relations internationales**

4, place Jussieu Tour Zamansky  
75252 Paris cedex 05  
Tel. 01 44 27 26 74  
[relations.internationales@upmc.fr](mailto:relations.internationales@upmc.fr)

**île de France**

# DUAL MASTERS IN BRAIN AND MIND SCIENCES

## NEUROSCIENCES



### Partner universities :

University College London  
École normale supérieure, Paris

### Contact : Ann Lohof

ann.lohof@snv.jussieu.fr

## ADMISSION CRITERIA:

### STUDENT POPULATION

- Applicants must have a bachelor degree (or Licence) in life sciences or a related discipline

### ADMISSION

- Applicants are selected for admission based on previous academic performance, motivation, and an interview

### Program:

This 2-year international Masters program aims to provide studies in a broad range of topics in the Neurosciences, at a cellular, molecular or cognitive level. The program allows students to design an individualised programme of study through taught modules and research projects in disciplines relevant to the Brain and Mind Sciences. The educational aim is to give a broad foundation in Brain & Mind

Sciences from a multi-disciplinary perspective and to provide a sound basis for choosing an appropriate topic and supervisor for doctoral research.

The high quality of teaching and research at the three partner institutions allows academic exploration throughout the Neurosciences, and provides the opportunity to undertake two research projects, one in each city.

## Calendar

**April** : Opening for applications  
**July** : Last admissions results  
**September** : Beginning of the program

### YEAR M1 - University College London

#### → 1<sup>st</sup> semester

Each student, after consultation with the course conveners and according to his particular interests, chooses taught courses

#### → 2<sup>nd</sup> semester

Laboratory research project, written report and oral defence.

### YEAR M2 - UPMC and École normale supérieure

#### → 1<sup>st</sup> semester

30 ECTS chosen from the UEs of the Neurosciences Specialty of Master BIP; the UEs of the Master of Cognitives Sciences of the ENS; and some UEs of the ENS Biology Department

#### → 2<sup>nd</sup> semester

Laboratory research project, written report and oral defence.

### Practical information

#### Recognition of the study period

**abroad** : The M1 year in London leads to an MSc diploma from UCL. The credits obtained in the M1 year are recognised for admission to the M2 at UPMC.

**Grant** : UPMC students are eligible for some university support.

**Language** : English proficiency is required for the M1 year. French proficiency is strongly recommended.

**Support** : Possibility of assistance in finding housing.

**Diploma** : Master of integrative Biology and physiology + International Masters supplement.

### Career opportunities:

PhD or other biomedical research careers.

## Websites

- [www.upmc.fr/fr/international/programmes\\_internationaux/programmes\\_internationaux\\_de\\_master/dual\\_master\\_in\\_brain\\_and\\_mind\\_sciences.html](http://www.upmc.fr/fr/international/programmes_internationaux/programmes_internationaux_de_master/dual_master_in_brain_and_mind_sciences.html)
- [www.ion.ucl.ac.uk/education/courses/dualmasters](http://www.ion.ucl.ac.uk/education/courses/dualmasters)
- [www.brain-and-mind.biologie.ens.fr/](http://www.brain-and-mind.biologie.ens.fr/)